

# LCD-Analogue-Digital-Clock for large rooms

## AMC 520



It's Time

### AMC 520

silver

VA-Steel

RAL

43,0 cm wide  
52,5 cm high  
2,5 cm deep

This radio-controlled clock combines an analogue mechanical type face and classy clock hands with a comfortable LCD date display.

The large type face and the large digits of the date display allow long reading distances for large and medium-sized rooms.

Especially developed and pin sharp 38-segment display with an excellent contrast. For excellent readability from almost all viewing angles and lightning conditions.

No cable for radio antenna or power supply necessary. This clock is equipped with AA batteries. Battery life approximately 4 years.

- Radio-controlled
- Wireless installation
- Flat and modern design
- Excellent readability from almost all viewing angles
- Clearly arranged analogue- and digital display
- Codes for months adjustable in different languages
- Symbols for radio reception, battery capacity etc.
- Menu guidance for manual operation
- Long battery life appr. 4 years
- High-contrast display
- Many options

**A clock for banks, savings banks, post offices, reception areas, offices, pharmacies, smaller retail stores, companies and industry.**

# AMC 520

## Technical Information:

Radio reception:	DCF-77
Quarz mode:	+/- 0,1 seconds per day
Symbols for:	RF signal indication, battery capacity, menu guidance
Dimensions W x H x D:	430 x 525 x 25 mm plus wall spacer of 9 mm
Front panel:	metall
Weight:	2,4 kg
Clock face diameter:	380 mm
Digit height date:	40 mm
Reading distance normal:	8 m
Reading distance (max.):	date 15 m, Zeit 30 m
Viewing angle (max.):	170°
Digit colour:	black
Battery power:	12 pcs. 1,5 Volt AA
Battery life:	appr. 4 years

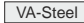

## Standard version:

Integrated radio receiver DCF-77  
Automatic summer-/wintertime changeover  
Months-Codes adjustable for different languages:  
German, English, Spanish, Italian, Dutch, French, Turkish, Polish  
Battery power appr. 4 years  
12-segment date display

## Standard finish:

**M** - Silvermetallic RAL 9006 

## Optionen:

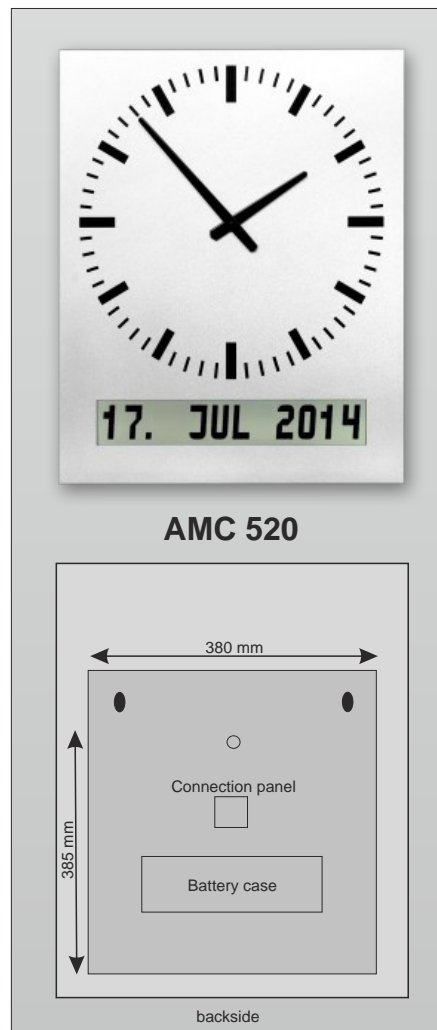
**V** - Mains operation 230 Volt  
**N** - Secondary clock input with polarity change 12 to 60 Volt  
**E** - External antenna with 6 m connection cable and plug  
**A** - Satin stainless steel panel   
- **xxx** Special finish RAL   
**T** - Temperature display internal (installed)  
**K** - Temperature sensor external with appr. 6 m cable

The temperature can be displayed firm or optional with the date.

## Order example:

LCD Clock AMC 520 for secondary clock operation  
in housing colour RAL 7042  
Order code: **AMC 520-N-7042**

LCD Clock AC 510 with 230 Volt connection and  
standard finish silvermetallic.  
Order code: **AMC 520-V-M**



Do you have any questions? No problem! Please contact us. We will be happy to provide you with help. No obligation.