

## Diary management of the AMC-20 (on the left)

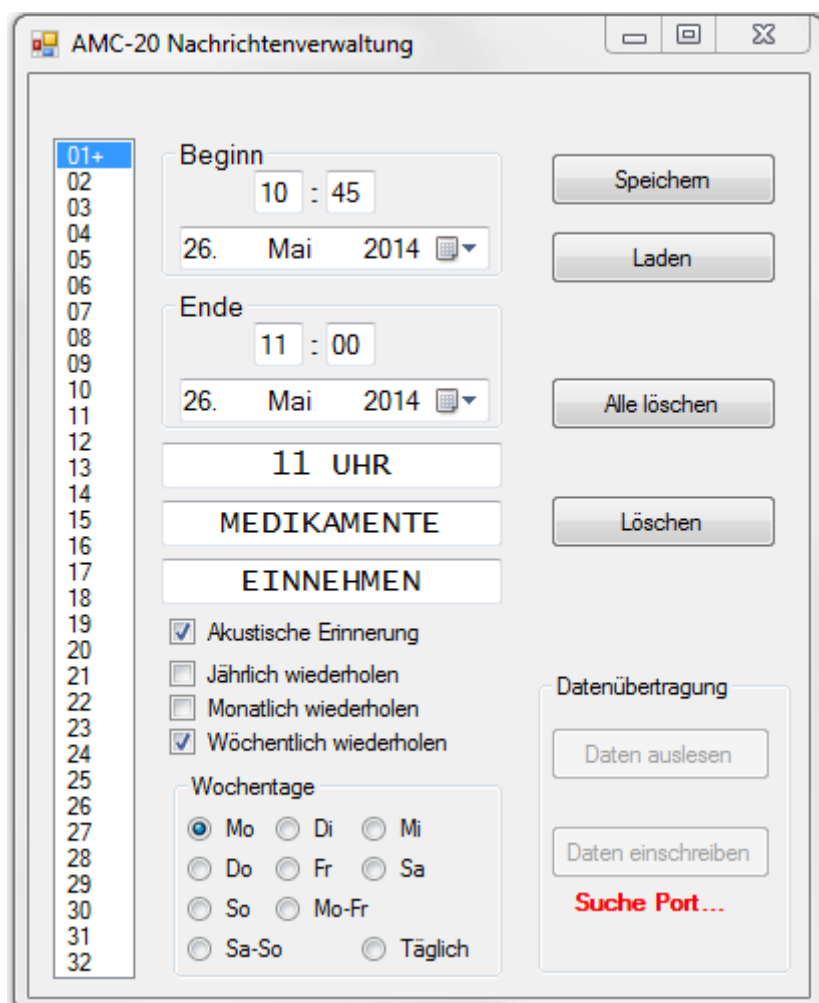
The clock has 32 interne storage spaces for dates and messages. Messages can be distinguished between non-recurring and recurring dates. All non-recurring dates will be deleted automatically from the clock after they have been expired. All recurring dates will be stored until deleted manually.

## PC-Programme

This programme is for creation and administration of the messages which are stored in the clock.

## Description of the PC-Programme operation elements

With the help of the PC-Programme all entered data will be stored on the hard disk and downloaded from there into the clock.



## **Date boxes for beginning / ending (Beginn / Ende)**

Into these fields you have to enter time and date of beginning and ending of the message / text that will be displayed on the clock. Please pay attention to indicate an earlier beginning date (time) than ending date (time). Otherwise the message can not be displayed on the clock.

## **Message list**

The message list is located on the left-hand side (Field 01 to 32). Each of the 32 numbers stands for a free or occupied storage space. All numbers with a "+" behind are already occupied storage spaces and content messages which you can choose and visualize. The blue lodged number shows the actual message on the display. In order to edit a stored message or feed the clock with a new message, please click on the corresponding number of the list. The previous shown message will be stored and the new message will be loaded and displayed. Independent of a set date and/or repeat function, a storage space only is occupied until you have entered minimum text into one of the 3 description fields below the end date.

## **Description fields**

Into these 3 fields you can enter the displayed text / message. If you choose to leave a line unoccupied, this line will show the time/date additionally during the message display on the clock. The entered text will be centred within the line automatically. Please note that the clock can only display numbers, capital letters and a few additional characters. All small letters will be converted automatically into capital letters after the cursor left the text boxes.

## **Options**

Below the description fields you will find the check boxes. With the check boxes you can set different options like an acoustic reminder or different cycle of message repeats (annually /jährlich, monthly/Monatlich, weekly/Wöchentlich, certain days). In case you activate the acoustic reminder /Akustische Erinnerung, 2 hours before end of the message display, a short signal tone will occur all 10 seconds until the message display on the clock ends.

Only one repeat option can be chosen at once. The annual repetition will show the message each year between the entered times and dates. Monthly repeat will show the message each month on the entered day and respective times. The rest of the date will not be analysed. Weekly repetition requires additionally the weekday information or information about a range within the week (e.g. Monday to Friday). On these days the message will be displayed between the indicated times. In this case the date will not be analysed.

## **Storing / Downloading**

All data entered so far will be stored on the hard disk or respectively downloaded from there.

## **Delete all (Alle löschen)**

A click on this button deletes all inserted messages after request.

## **Delete (Löschen)**

A click on this button deletes the last inserted message. All text fields and check boxes will be deleted and times for beginning and ending will be set to 00:00.

## **Data transfer (Datenübertragung)**

The buttons 'data register' and 'data readout' are for clock communication. The buttons are inactive until the clock has been identified. By connecting the clock to the PC first and starting the PC programme afterwards it is possible to accelerate the automatic clock identification. Below the two buttons you will find the status display. Please wait until the status changes from "Search Port" in red letters to "Ready for COM4" in green letters. The data transfer is possible only when "Ready for COM4" appears.

A click on 'data register' transfers all stored data to the clock and overwrites all data that have been stored in the clock so far. In case you have entered a message that should be displayed immediately on the clock display, please note that the message will appear not until the minute hand has moved forward to the next minute. The button 'data readout' will read-out all data stored in the clock and shows them in the PC-Programme. Please do not disconnect the clock from the PC during the transfer progress. That the clock is in progress will be visible by the progress bar, which will appear between the 2 buttons during data transfer.

## **Translation:**

Beginn: start, Ende: end

Wochentage – weekdays

Mo – Monday, Di- Tuesday, Mi- Wednesday, Do-Thursday, Fr – Friday,

Sa – Saturday, So – Sunday, Mo-Fr – Monday to Friday,

Sa-So – Saturday to Sunday, Täglich - Daily

Akustische Erinnerung: acoustic reminder

Jährlich wiederholen: repeat each year

Monatlich wiederholen: repeat each month

Wöchentlich wiederholen: repeat each week

Speichern: store, Laden: download, Alle löschen: delete all, Löschen: delete

Datenübertragung: data transfer,

Daten auslesen: data readout, Daten einschreiben: data register,

Suche port: search port